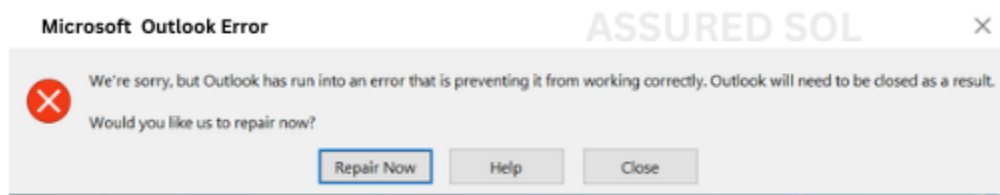


Resolving Outlook Error: We are sorry, but Outlook ran into an error



If you've encountered the message, "We're sorry, but Outlook ran into an error," you're not alone. [Outlook](#) is a widely used email client, but like any software, it can sometimes face issues. Don't worry; we've got you covered with some troubleshooting steps to help you get back to smooth emailing.

Why does this Error Message Appear?

The [error message](#) "We are sorry, but Outlook ran into an error" is a generic notification indicating that something unexpected occurred in the Outlook application. It could be caused by various issues, such as a corrupted profile, add-in conflicts, or problems with the Outlook [installation](#).

Steps to Fix Error Message "We are sorry, but Outlook ran into an error":

To troubleshoot the "[We are sorry, ran into an error](#)" message, you can try the follow the given steps..If the issue persists after trying these steps, provide more details about the context or error message for further assistance.

1. Check Your Internet Connection:

Ensure that your internet connection is stable. Outlook relies on a consistent connection to synchronize your emails and updates. If you're having connectivity issues, resolving them might fix the error.

2. Restart Outlook:

Close and reopen Outlook to give it a fresh start. Sometimes, a simple restart can resolve temporary glitches or conflicts that lead to errors.

3. Update Outlook:

Make sure you are using the latest version of Outlook. Developers regularly release updates to address bugs and enhance performance. Updating your software might resolve the error you're facing.

4. Disable Add-ins:

Third-party add-ins can sometimes interfere with Outlook's functionality. Try disabling them and see if the error persists. You can re-enable them one by one to identify the culprit.

5. Run Outlook in Safe Mode:

Launching Outlook in safe mode can help determine if the issue is related to an add-in or a customization. To open Outlook in safe mode, hold the Ctrl key while launching the [application](#).

6. Repair Outlook Data Files:

Corrupted data files can cause errors. Use the built-in Outlook Inbox Repair tool (ScanPST) to repair any damaged data files. Locate the tool on your system and follow the on-screen instructions.

7. Check for Windows Updates:

Ensure that your operating system is up to date. Sometimes, compatibility issues between Outlook and your operating system can result in errors. Running Windows Update can address this.

8. Create a New Outlook Profile:

A corrupt Outlook profile can be the culprit. Create a new profile and see if the error persists. If the issue is resolved, you can transfer your old data to the new profile.

9. Contact Support:

If all else fails, reaching out to Microsoft Support can provide you with tailored assistance. Provide them with specific details about the error, and they can guide you through advanced troubleshooting steps.

Conclusion:

By following these steps, you increase the chances of resolving the “Outlook ran into an error” message. Remember to back up your important data before attempting major changes to avoid potential data loss. If the issue persists, [professional support](#) may be necessary.

[Click here to visit our tech expert to clear your problem Chat with us for more Technical Support.](#)